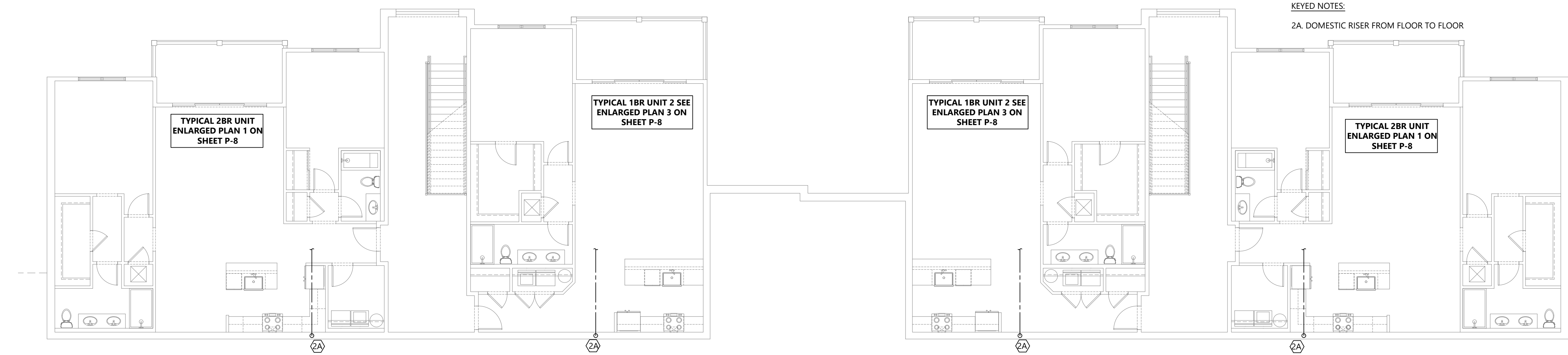


1 PLUMBING SANITARY PLAN BLDG 3 BASEMENT  
1/8"=1'-0"



2 PLUMBING SUPPLY PLAN BLDG 3 BASEMENT  
1/8"=1'-0"

KEY NOTES:  
1A. 3" DRAIN RISER AND 2" VENT RISER FROM FLOOR TO FLOOR.  
TERMINATE WITH 3" VENT THRU ROOF  
1B. 2" DRAIN RISER FROM FLOOR TO FLOOR. TERMINATE WITH 3" VENT  
THRU ROOF  
1D. 4" UP TO FIRST FLOOR

SEE CIVIL PLAN  
FOR LOCATION  
OF WASTE

SEE CIVIL PLAN FOR  
SANITARY PIPING  
CONTINUATION

- PRELIMINARY -  
NOT FOR CONSTRUCTION

SIGNATURE:

CLIENT:  
The Orchards at Naples Road, LLC  
341 N Main Street  
Hendersonville, NC 28792  
Luis Graef: President



PROJECT:  
The Orchards at Naples Road  
Apartment Complex  
Hendersonville, North Carolina

#	REVISIONS	DATE

DWG INFO:  
ISSUE DATE: 4/11/25  
PROJECT #: 22105  
DRAWN BY: JS  
CHECKED BY: JK

DWG DESCRIPTION:  
**PLUMBING PLAN  
BLDG 3 BASEMENT**

SHEET #:  
**P-1**

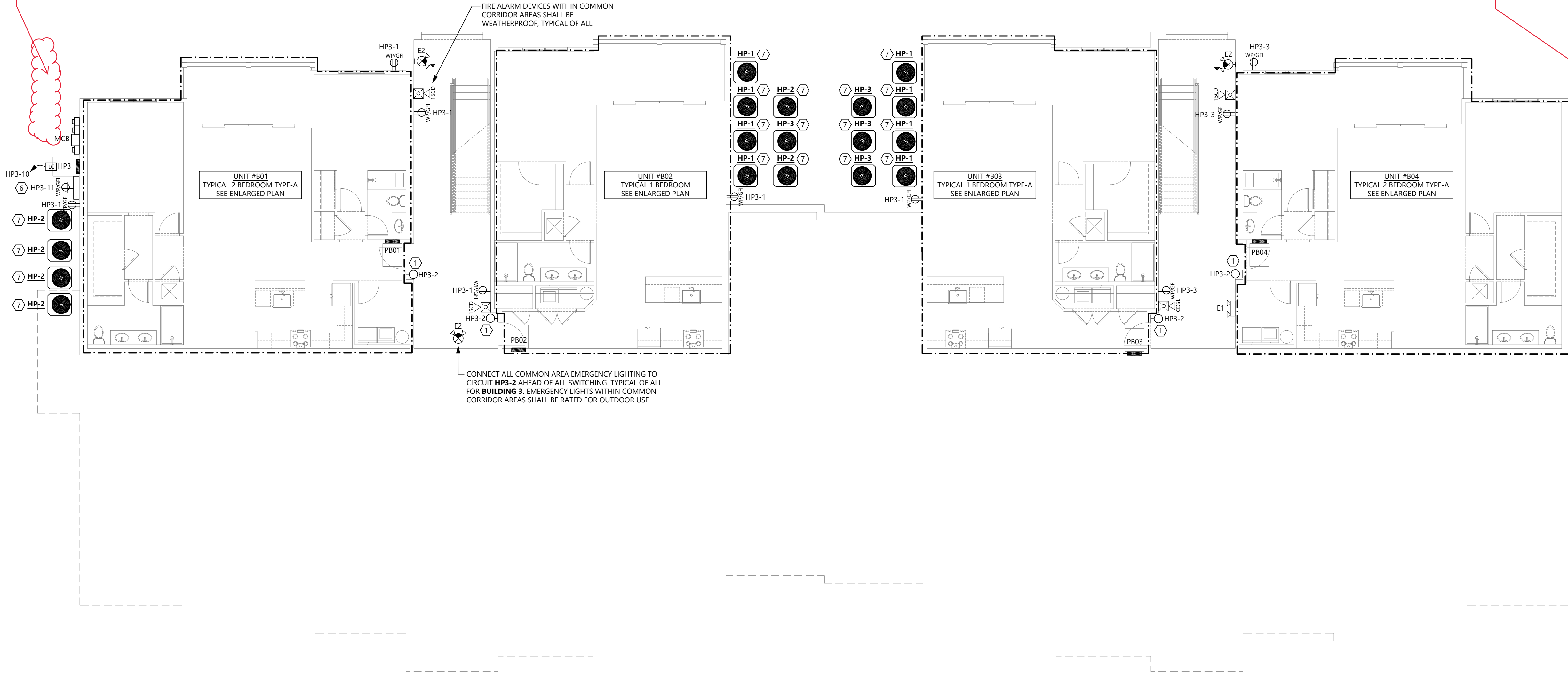






HVAC UNITS  
NEED TO GO  
BACK HERE DUE  
TO SLOPE

HVAC UNITS  
NEED TO GO  
BACK HERE DUE  
TO SLOPE



- GENERAL NOTES:
- CONTRACTOR SHALL PROVIDE DETAILED AS-BUILT DRAWINGS. PROVIDE COPY OF AS-BUILT DRAWINGS TO OWNER AND ENGINEER AT PROJECT COMPLETION.
  - ALL CONDUIT SHALL BE CONCEALED BEHIND WALLS AND ABOVE CEILINGS. NO EXPOSED CONDUIT PERMITTED.
  - MC CABLE SHALL NOT BE EXPOSED. CIRCUITS NOT CONCEALED BY CEILINGS SHALL BE RUN IN CONDUIT. CIRCUITS INSTALLED BEHIND HARD CEILINGS SHALL BE IN CONDUIT. ALL WORK IN ELECTRICAL ROOMS SHALL BE IN CONDUIT.
  - LABEL ALL RECEPTACLES WITH CIRCUIT AND PANEL INFORMATION.
  - PROVIDE PLASTIC BUSHINGS ON CONDUIT ENDS FOR ALL CONDUITS STUBBED ABOVE CEILING.
  - CONTRACTOR SHALL COORDINATE LIGHT FIXTURE LOCATION WITH MECHANICAL CONTRACTOR AND NEW DUCTWORK PRIOR TO ROUGH-IN. RELOCATION OF DUCTWORK FOR CONFLICT WITH NEW LIGHTING WILL BE AT EXPENSE OF CONTRACTOR.
  - PROVIDE 90 MINUTE BATTERY BACKUP FOR ALL EMERGENCY FIXTURES SHOWN ON THIS PLAN. CONNECT TO LOCAL LIGHTING CIRCUIT AHEAD OF SWITCHING.
  - COORDINATE ALL MECHANICAL EQUIPMENT ELECTRICAL CONNECTION LOCATIONS AND REQUIREMENTS WITH MECHANICAL DRAWINGS AND APPROVED MECHANICAL SUBMITTALS PRIOR TO ORDERING AND INSTALLATION.
  - ALL 15A AND 20A RECEPTACLES IN COMMON AREAS SHALL BE TAMPER RESISTANT.
  - SMOKE/HEAT DETECTORS SHALL NOT BE LOCATED WITHIN 3' OF MECHANICAL AIR TERMINALS AND DIFFUSERS.
  - COORDINATE LOCATIONS OF MECHANICAL EQUIPMENT WITH MECHANICAL CONTRACTOR PRIOR TO INSTALLATION.
- KEYED NOTES (ALL MAY NOT BE ON THIS SHEET):
- WALL SCONCE (FIXTURE TAG 'B') AT EACH APARTMENT ENTRY DOOR. REFER TO ENLARGED UNIT PLANS. COORDINATE EXACT LOCATION IN FIELD WITH ARCHITECT. ROUTE THROUGH LIGHTING CONTACTOR FOR ASSOCIATED BUILDING. CONTACTOR TO BE LOCATED ADJACENT TO BUILDING HOUSE PANEL. SEE LIGHTING CONTACTOR DETAIL.
  - COORDINATE FACP LOCATION WITH FIRE RISER, IRRIGATION CONTROLS, ETC. WITHIN UTILITY ROOM.
  - POWER FOR IRRIGATION CONTROLS. COORDINATE EXACT LOCATION WITH OWNER PRIOR TO ROUGH-IN.
  - ALL QUANTITIES, LOCATIONS, ETC. OF TAMPER AND FLOW SWITCHES SHALL BE COORDINATED WITH FIRE PROTECTION CONTRACTOR PRIOR TO START OF WORK AND ORDERING OF EQUIPMENT, DEVICES, ETC.
  - FIRE ALARM BELL. COORDINATED EXACT QUANTITY, LOCATION, REQUIREMENTS, ETC. WITH FIRE PROTECTION CONTRACTOR PRIOR TO START OF WORK AND ORDERING OF EQUIPMENT, DEVICES, ETC.
  - MAIN TELECOM CABINET FOR BUILDING. PROVIDE 36"x36" NEMA 3R CABINET AND (2)-4" C FROM CABINET TO MAIN PROPERTY LINE AND CONNECTION TO UTILITY. PROVIDE WP/GFI QUAD RECEPTACLE WITHIN CABINET. CONNECT TO CIRCUIT SHOWN ON PLANS.
  - COORDINATE WITH M.C. FOR WHICH UNIT EACH HEAT PUMP IS ASSOCIATED WITH. SIZE FEEDERS TO ACCOMMODATE VOLTAGE DROP PER NEC. SEE ENLARGED UNIT PLAN AND PANEL SCHEDULE FOR CIRCUIT DESIGNATION, DISCONNECT SIZE, ETC.

# 1 OVERALL PLAN - BUILDING 3 (28-UNIT BLDG) - BASEMENT LEVEL

1/8"=1'-0"



PRELIMINARY -  
NOT FOR CONSTRUCTION

SIGNATURE

CLIENT:  
The Orchards at Naples Road, LLC  
341 N Main Street  
Hendersonville, NC 28792  
Luis Graef: President



PROJECT:  
The Orchards at Naples Road  
Apartment Complex  
Hendersonville, North Carolina

#	REVISIONS	DATE

DWG INFO:  
ISSUE DATE: 4/11/25  
PROJECT #: 22105  
DRAWN BY: MFL  
CHECKED BY: JK

DWG DESCRIPTION:  
OVERALL ELECTRICAL  
PLAN - BASEMENT -  
BUILDING 3

SHEET #:  
E-21