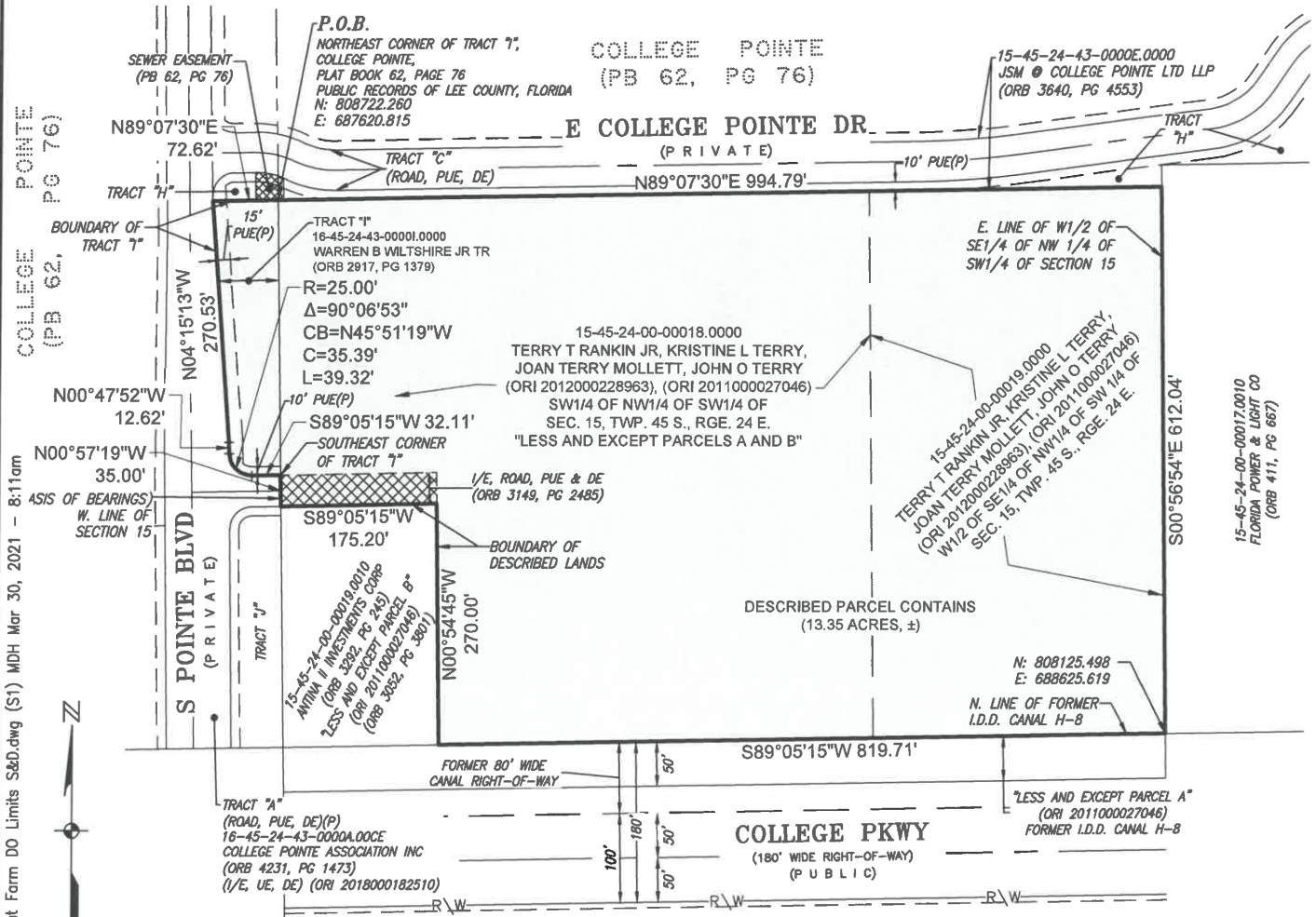


# SKETCH AND DESCRIPTION

"INSPIRATION AT SOUTH POINTE - DEVELOPMENT ORDER LIMITS"  
 SECTIONS 15 & 16, TOWNSHIP 45 SOUTH, RANGE 24 EAST  
 LEE COUNTY, FLORIDA



- NOTES:
- THIS IS NOT A BOUNDARY SURVEY, NOR IS IT INTENDED TO BE USED AS ONE.
  - COORDINATES AND HORIZONTAL DATA SHOWN HEREON ARE IN FEET AND ARE PROJECTED ONTO THE FLORIDA STATE PLANE COORDINATE SYSTEM, WEST ZONE, NORTH AMERICAN DATUM OF 1983 (NAD83), 2011 ADJUSTMENT.
  - BEARINGS SHOWN HEREON ARE BASED ON THE WEST LINE OF THE SOUTHWEST ONE-QUARTER (SW1/4) OF SECTION 15, TOWNSHIP 45 SOUTH, RANGE 24 EAST, LEE COUNTY, FLORIDA, WHEREIN SAID WEST LINE BEARS N.00°57'19"W.
  - PARCEL CONTAINS 13.35 ACRES, MORE OR LESS.
  - P.O.B. = POINT OF BEGINNING
  - ORI = OFFICIAL RECORDS INSTRUMENT
  - ORB = OFFICIAL RECORDS BOOK
  - STRAP = LEE COUNTY PARCEL NUMBER
  - PB/(P) = PLAT BOOK/PLAT
  - PG = PAGE
  - PUE = PUBLIC UTILITY EASEMENT
  - UE = UTILITY EASEMENT
  - DE = DRAINAGE EASEMENT
  - I/E = INGRESS/EGRESS EASEMENT
  - R/W = RIGHT-OF-WAY
  - I.D.D. = IONA DRAINAGE DISTRICT
  - N = NORTHING
  - E = EASTING
  - NOT VALID WITHOUT SHEETS 1 THROUGH 2 OF 2.

**NOT A SURVEY**

I HEREBY CERTIFY, TO THE BEST OF MY KNOWLEDGE AND BELIEF, THAT THE LEGAL DESCRIPTION AND ATTACHED SKETCH WERE PREPARED IN ACCORDANCE WITH THE APPLICABLE PROVISIONS OF CHAPTER 5J-17.05, FLORIDA ADMINISTRATIVE CODE, PURSUANT TO CHAPTER 472, FLORIDA STATUTES.

*Mark D. Haines*

MARK D. HAINES (FOR THE FIRM L.B. 642)  
 PROFESSIONAL SURVEYOR AND MAPPER  
 FLORIDA CERTIFICATE NO. 5312

DATE SIGNED: 3/30/21

NOT VALID WITHOUT THE SIGNATURE AND ORIGINAL RAISED SEAL OF A FLORIDA LICENSED SURVEYOR AND MAPPER.

**JOHNSON ENGINEERING**

JOHNSON ENGINEERING, INC.  
 2122 JOHNSON STREET  
 P.O. BOX 1550  
 FORT MYERS, FLORIDA 33902-1550  
 PHONE: (239) 334-0046  
 FAX: (239) 334-3661  
 E.B. #642 & L.B. #642

SKETCH AND DESCRIPTION				
"INSPIRATION AT SOUTH POINTE - DEVELOPMENT ORDER LIMITS"				
SECTIONS 15 & 16, TOWNSHIP 45 SOUTH, RANGE 24 EAST				
LEE COUNTY, FLORIDA				
DATE	PROJECT NO.	FILE NO.	SCALE	SHEET
03-29-21	20192125-000	15-45-24	1"=200'	1 OF 2

**DESCRIPTION**

INSPIRATION AT SOUTH POINTE – DEVELOPMENT ORDER LIMITS  
(NOT INTENDED FOR USE IN CONVEYANCE OF REAL PROPERTY)

A PARCEL OF LAND LYING IN SECTIONS 15 AND 16, TOWNSHIP 45 SOUTH, RANGE 24 EAST, LEE COUNTY, FLORIDA, AND BEING MORE PARTICULARLY DESCRIBED AS FOLLOWS:

BEGIN AT THE NORTHEAST CORNER OF TRACT I ACCORDING TO THE PLAT OF COLLEGE POINTE AS RECORDED IN PLAT BOOK 62, AT PAGE 76 OF THE PUBLIC RECORDS OF LEE COUNTY, FLORIDA; THENCE, ALONG THE NORTH LINE OF LANDS DESCRIBED IN OFFICIAL RECORDS INSTRUMENT #2011000027046 OF THE AFOREMENTIONED PUBLIC RECORDS, N.89°07'30"E., 994.79 FEET; THENCE, ALONG THE EAST LINE OF THE WEST ONE-HALF OF THE SOUTHEAST ONE-QUARTER OF THE NORTHWEST ONE-QUARTER OF THE SOUTHWEST ONE-QUARTER OF SAID SECTION 15, S.00°56'54"E., 612.04 FEET TO THE NORTH LINE OF FORMER IONA DRAINAGE DISTRICT CANAL H-8, AS DESCRIBED IN OFFICIAL RECORDS INSTRUMENT NO. 2011000027046 OF THE AFOREMENTIONED PUBLIC RECORDS; THENCE, ALONG SAID NORTH LINE, S.89°05'15"W., 819.71 FEET; THENCE, ALONG THE BOUNDARY OF LANDS DESCRIBED IN OFFICIAL RECORDS BOOK 3052, PAGE 3801 OF THE AFOREMENTIONED PUBLIC RECORDS FOR THE FOLLOWING TWO (2) COURSES:

- 1. N.00°54'45"W., 270.00 FEET;
- 2. S.89°05'15"W., 175.20 FEET;

THENCE, ALONG THE WEST LINE OF THE AFOREMENTIONED SECTION 15, N.00°57'19"W., 35.00 FEET TO THE SOUTHEAST CORNER OF THE AFOREMENTIONED TRACT I; THENCE, ALONG THE BOUNDARY OF SAID TRACT I FOR THE FOLLOWING FIVE (5) COURSES:

- 1. S.89°05'15"W., 32.11 FEET;
- 2. ALONG THE ARC OF A TANGENT CIRCULAR CURVE CONCAVE TO THE NORTHEAST HAVING FOR ITS ELEMENTS A RADIUS OF 25.00 FEET, A CENTRAL ANGLE OF 90°06'53", A CHORD OF 35.39 FEET, A CHORD BEARING OF N.45°51'19"W., AN ARC OF 39.32 FEET;
- 3. N.00°47'52"W., 12.62 FEET;
- 4. N.04°15'13"W., 270.53 FEET;
- 5. N.89°07'30"E., 72.62 FEET

TO THE POINT OF BEGINNING.

SAID PARCEL CONTAINS 581,398 SQUARE FEET OR 13.35 ACRES, MORE OR LESS.

\*NOT VALID WITHOUT SHEETS 1 THROUGH 2 OF 2.

\\FTMS01\Drawings\2019\20192125-000\Surveying\Sketches\20192125-000 Goat Farm DO Limits S&D.dwg (SZ) MDH Mar 30, 2021 - 8:11am



JOHNSON ENGINEERING, INC.  
2122 JOHNSON STREET  
P.O. BOX 1550  
FORT MYERS, FLORIDA 33902-1550  
PHONE: (239) 334-0046  
FAX: (239) 334-3661  
E.B. #642 & L.B. #642

DESCRIPTION				
"INSPIRATION AT SOUTH POINTE - DEVELOPMENT ORDER LIMITS" SECTIONS 15 & 16, TOWNSHIP 45 SOUTH, RANGE 24 EAST LEE COUNTY, FLORIDA				
DATE	PROJECT NO.	FILE NO.	SCALE	SHEET
03-29-21	20192125-000	15-45-24	N/A	2 OF 2