



LEGEND

□ Subject Property Boundary

0 100 200

Scale in Feet

SOURCE: Google Earth

SUBJECT PROPERTY BOUNDARY MAP



Phase II Environmental Site Assessment
College Parkway Property
8830 College Parkway
Fort Myers, Lee County, Florida 33919



Zimmer Development Company
Project No. 2533-A1
November 2019
Figure 1



SOURCE: Google Earth

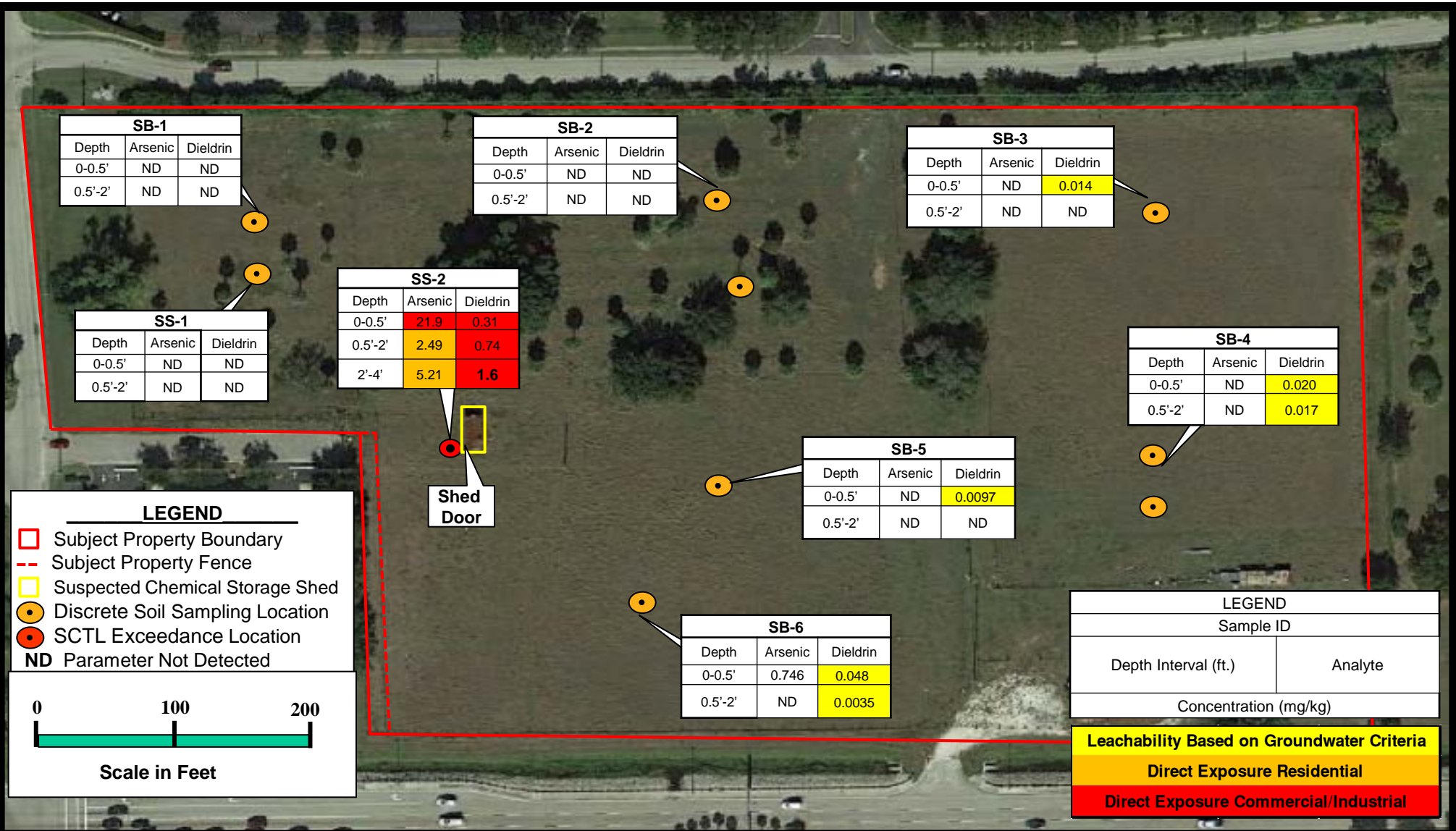
SOIL BORING LOCATION MAP



Phase II Environmental Site Assessment
College Parkway Property
8830 College Parkway
Fort Myers, Lee County, Florida 33919



Zimmer Development Company
Project No. 2533-A1
November 2019
Figure 2



SOURCE: Google Earth

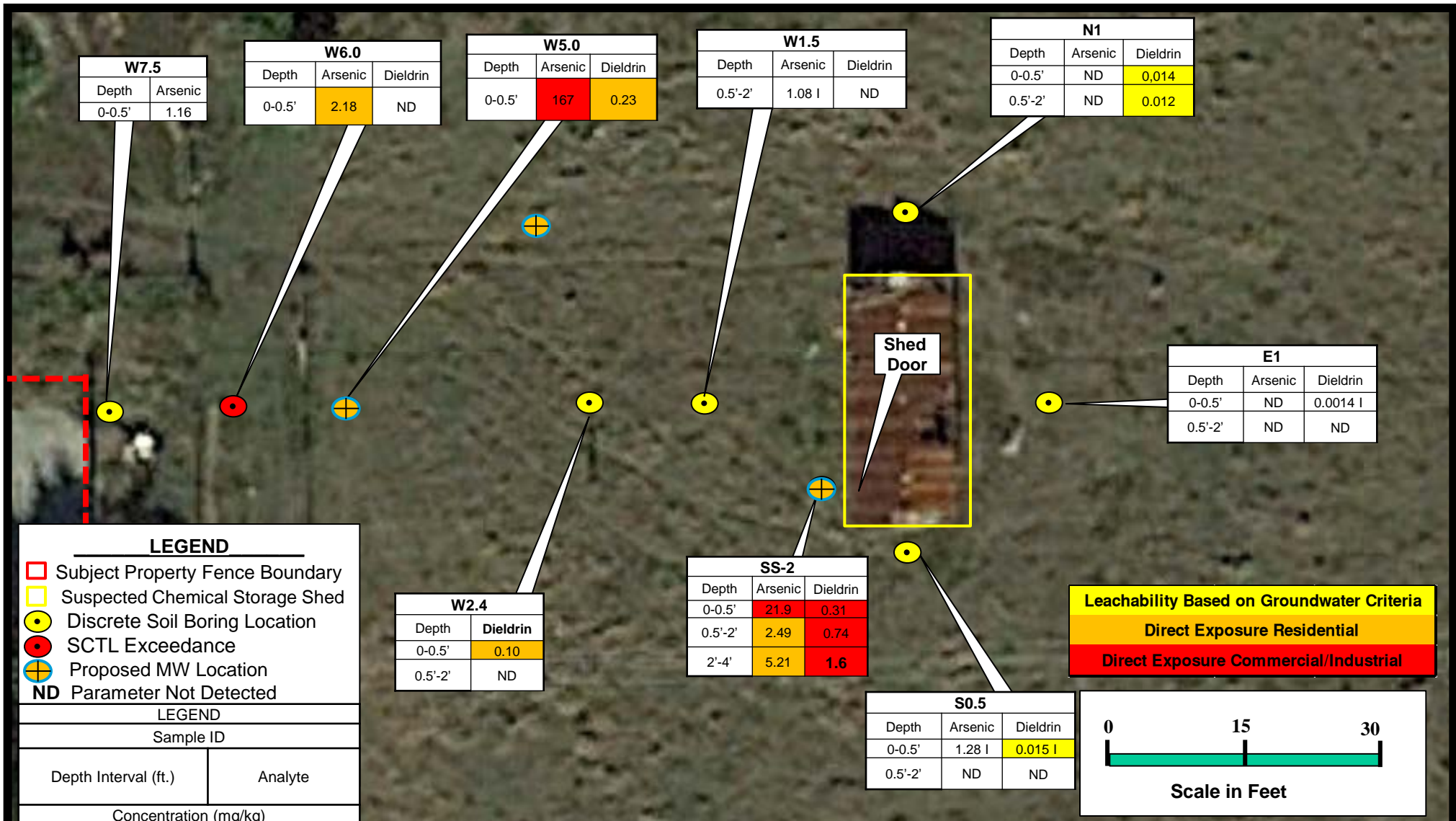
SOIL SAMPLING CONCENTRATION MAP

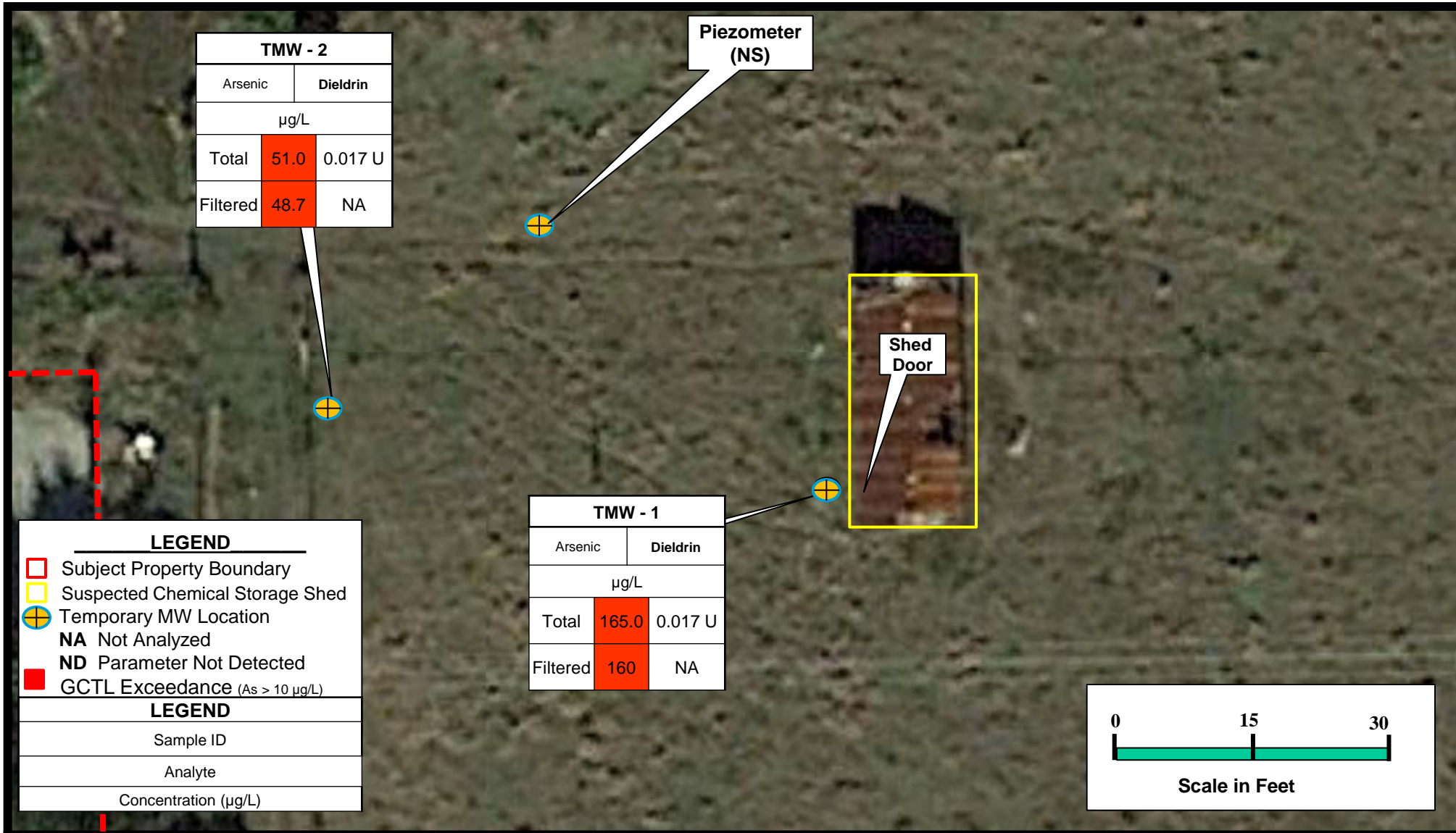


Phase II Environmental Site Assessment
College Parkway Property
8830 College Parkway
Fort Myers, Lee County, Florida 33919



Zimmer Development Company
Project No. 2533-A1
November 2019
Figure 3





GROUNDWATER CONCENTRATION (µg/L) SAMPLING MAP

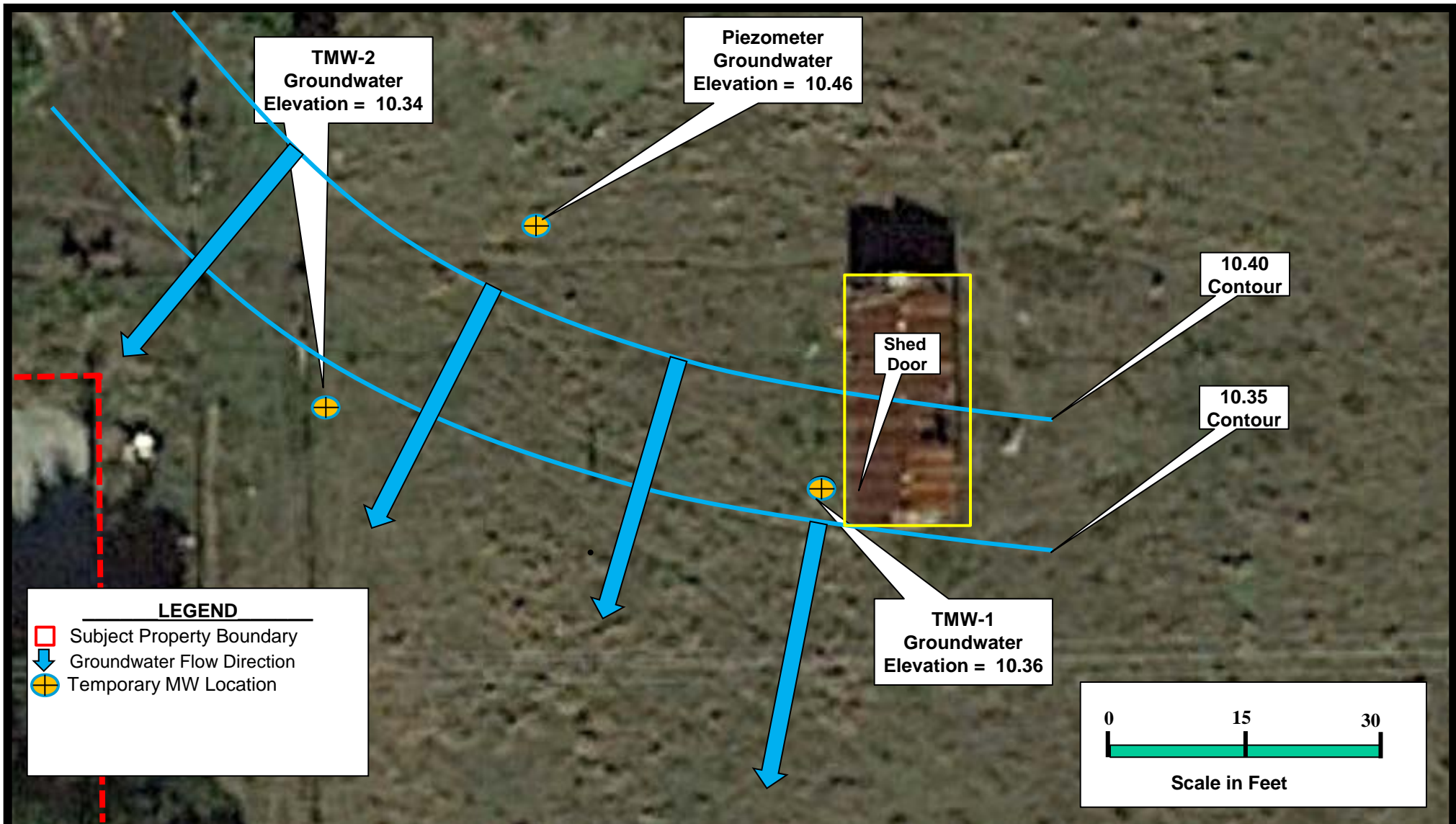
SOURCE: Google Earth



Phase II Environmental Site Assessment
College Parkway Property
8830 College Parkway
Fort Myers, Lee County, Florida 33919



Zimmer Development Company
Project No. 2533-A1
November 2019
Figure 5



SOURCE: Google Earth

GROUNDWATER FLOW MAP



Phase II Environmental Site Assessment
College Parkway Property
8830 College Parkway
Fort Myers, Lee County, Florida 33919



Zimmer Development Company
Project No. 2533-A1
November 2019
Figure 6