

MARK	SPACE DESIGNATION	FLOOR MATERIAL	BASE MATERIAL	CROWN MOLDING	WALLS								CEILING		REMARKS	
					NORTH		EAST		SOUTH		WEST		MATERIAL L	FINISH		
					MATERIAL	FINIS H	MATERIAL	FINISH	MATERIAL	FINISH	MATERIAL	FINIS H				
P-01	PAVILION	CONC.	---	---	GWB	C.T.	GWB	C.T.	GWB	C.T.	GWB	C.T.	GWB	C.T.	GWB	PNT
P-02	MEN	CONC.	C.T.	---	GWB	C.T.	GWB	C.T.	GWB	C.T.	GWB	C.T.	GWB	C.T.	GWB	PNT
P-03	WOMEN	CONC.	C.T.	---	GWB	C.T.	GWB	C.T.	GWB	C.T.	GWB	C.T.	GWB	C.T.	GWB	PNT

MARK	HARDWARE SET	TYPE	Width	HEIGHT	THICKNESS	DOOR			FRAME			REMARKS
						MATERIAL L	MATERIAL	HEAD	JAMB	THRESHOLD		
P02	P1	E	3'-0"	6'-8"	1 3/4"	HM	HM	B5/A70.01	D3-D5/A70.01	F7/A70.01		
P03	P1	E	3'-0"	6'-8"	1 3/4"	HM	HM	B5/A70.01	D3-D5/A70.01	F7/A70.01		

ATTIC VENT CALCULATIONS

	REQUIRED	PROVIDED
- TOTAL ROOF AREA	556 S.F.	
- PER FBC 2010 (1/300)	X .00333	
- VENTILATED AREA	1.86 S.F.	
- TOTAL SOFFIT LINEAR FT	98 L.F.	
- OPEN NET VENT (HARDIE)	YES	X .0347
- OPEN NET VENT (TAMLYN)	NO	
- NET FREE AREA REQ'D	0.93 S.F. (50%)	3.40 S.F.
- LINEAR FEET OF VENT		24.0 L.F.
- NET RIDGE VENT AREA		X .094
- NET FREE AREA REQ'D	0.93 S.F. (50%)	2.25 S.F.

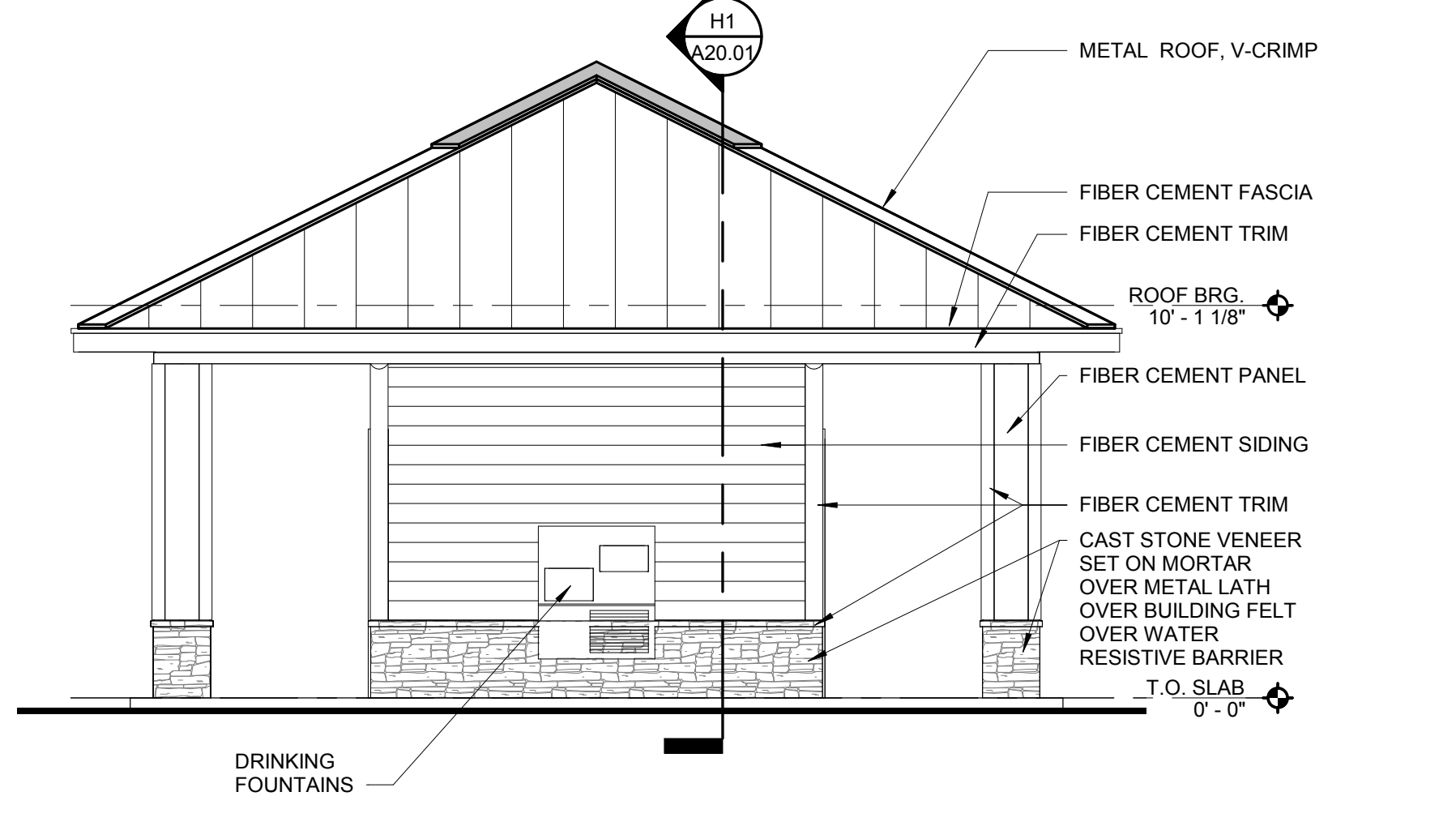
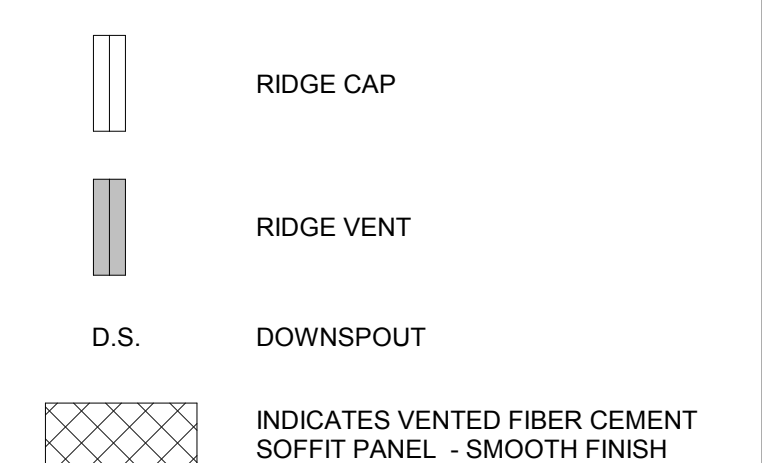
VENT MATERIALS

SOFFIT VENT at EAVE	CERTAITEED	0.0347	net sq. in./lin ft.
VENTED SOFFIT		5.0	net sq. ft./lin ft.
SOFFIT VENT at RIDGE VENT at UPPER PORTION	TAMLYN	0.0625	net sq. in./lin ft.
VENTED SOFFIT		9.0	net sq. ft./lin ft.
OFF RIDGE VENT at UPPER PORTION	CORAVENT V300 MIN. DESIGN	0.094	net sq. in./lin ft.
		13.5	net sq. ft./lin ft.
OFF RIDGE VENT at UPPER PORTION	4 ft. OFF RIDGE BY "FLAMCO" OR SIM.	0.555	net sq. in./lin ft.
		80.0	net sq. ft./lin ft.

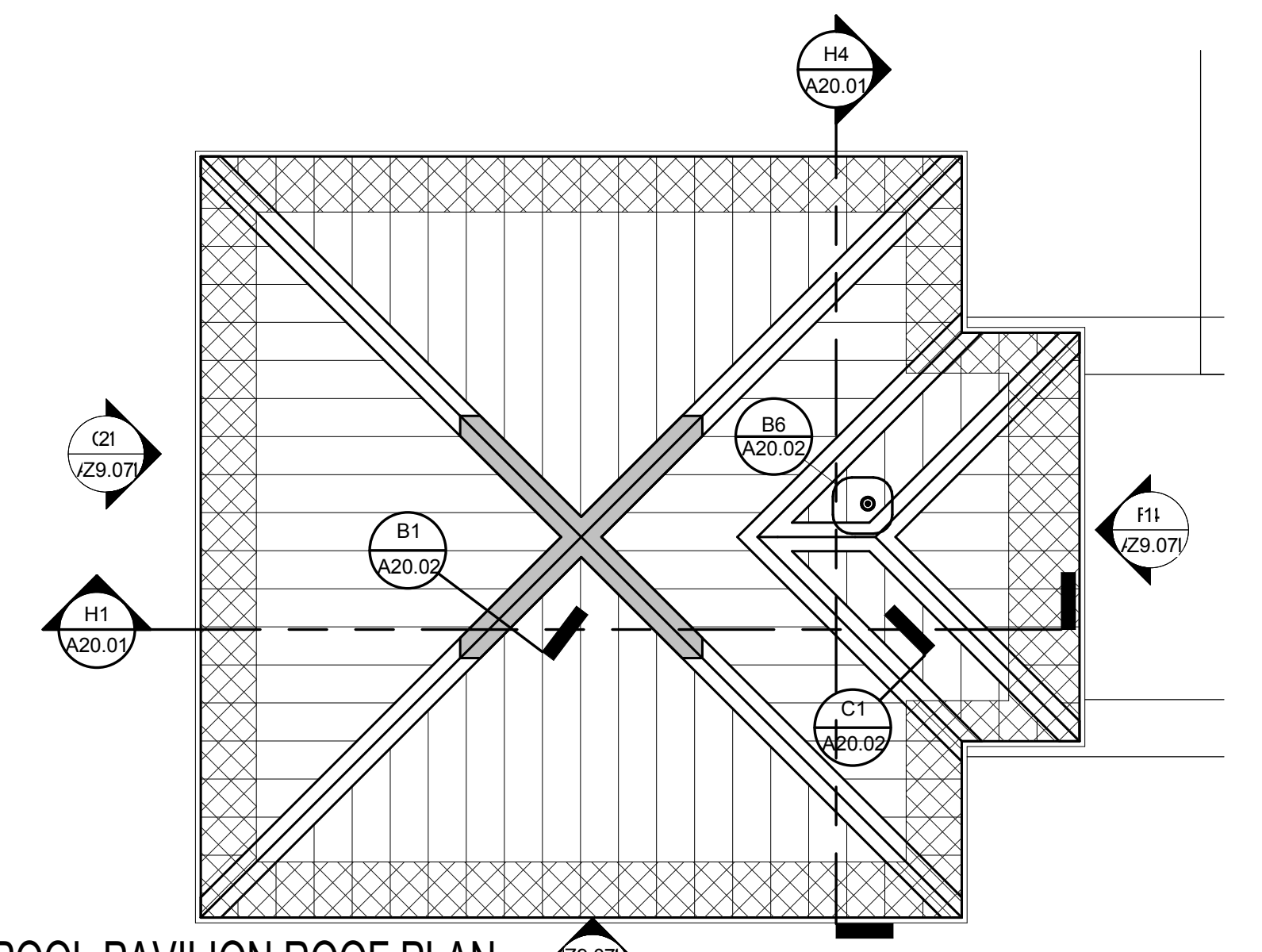
ROOF NOTES:

- PAINT ALL ROOF VENTS & PENETRATIONS TO MATCH ROOF COLOR.
- LEAVE OPENING IN MAIN ROOF SHEATHING FOR VENTILATION UNDERNEATH OVER BUILT AREAS.
- CONTRACTOR SHALL BE RESPONSIBLE TO MEET MINIMUM ROOF VENT REQUIREMENTS.
- GENERAL CONTRACTOR SHALL COORDINATE ALL ROOF ACCESSORIES INSTALLATION DETAILS PER MANUFACTURERS SPEC'S TO MAINTAIN THE WATERTIGHT SYSTEM & EXTENDED WATERPROOFING WARRANTY.
- COORDINATE DOWNSPOUT DISCHARGE WITH CIVIL DRAWINGS WHERE NOT TAKEN TO STORM. PROVIDE SPLASH BLOCK.
- DOWNSPOUTS & GUTTERS SHOWN ARE MIN. REQUIREMENTS SUBJECT TO OWNERS CONSIDERATION.
- SEE CIVIL SITE PLAN FOR BUILDING ORIENTATION. CARDINAL DIRECTIONS SHOWN FOR REFERENCE ONLY.

ROOF LEGEND:



C1 POOL PAVILION FRONT ELEVATION
1/4" = 1'-0"

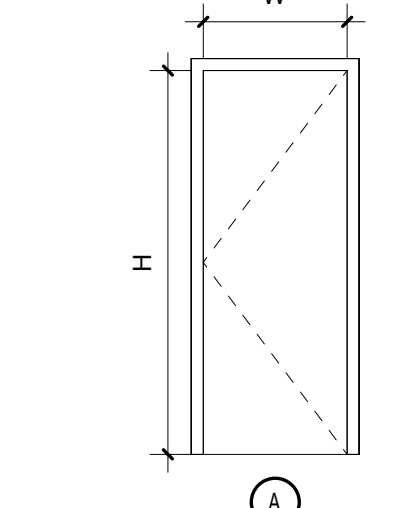


E7 POOL PAVILION ROOF PLAN
3/16" = 1'-0"

PERMIT REVIEW

FINISH LEGEND

- CONC - SEALED CONCRETE
- GWB - GYPSUM WALL BOARD
- VIN - VINYL WOOD PLANKS
- FS - FIBER CEMENT LAP SIDING
- PNT - PAINT
- CPT - CARPET
- WD - WOOD
- C.T. - CERAMIC TILE
- ST - STUCCO
- OP - ORANGE PEEL
- VN - VINYL
- VCT - VINYL CHLORIDE TILE
- PAV - PAVERS



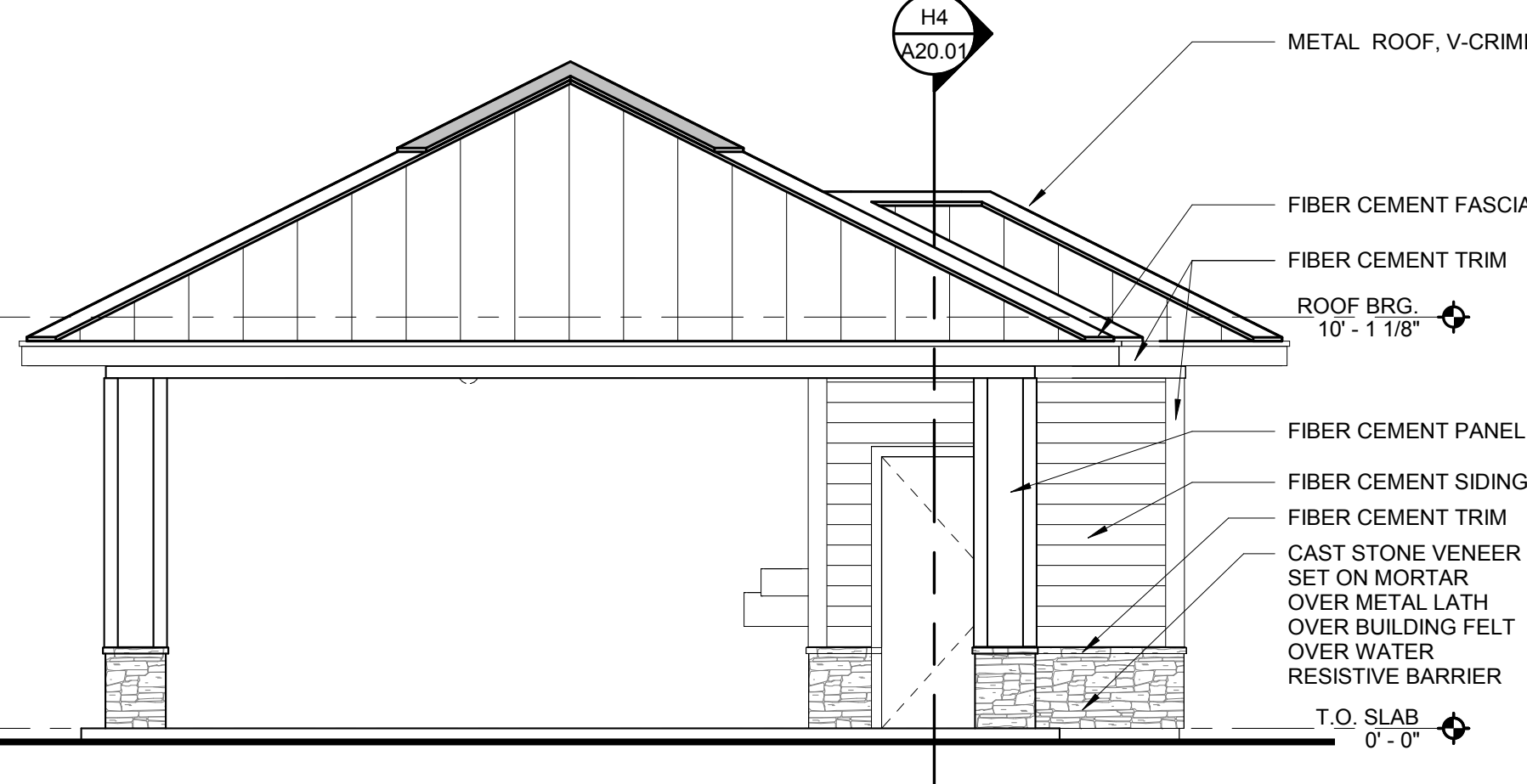
POOL PAVILION - DOOR TYPE
1/4" = 1'-0"

ISSUE HISTORY

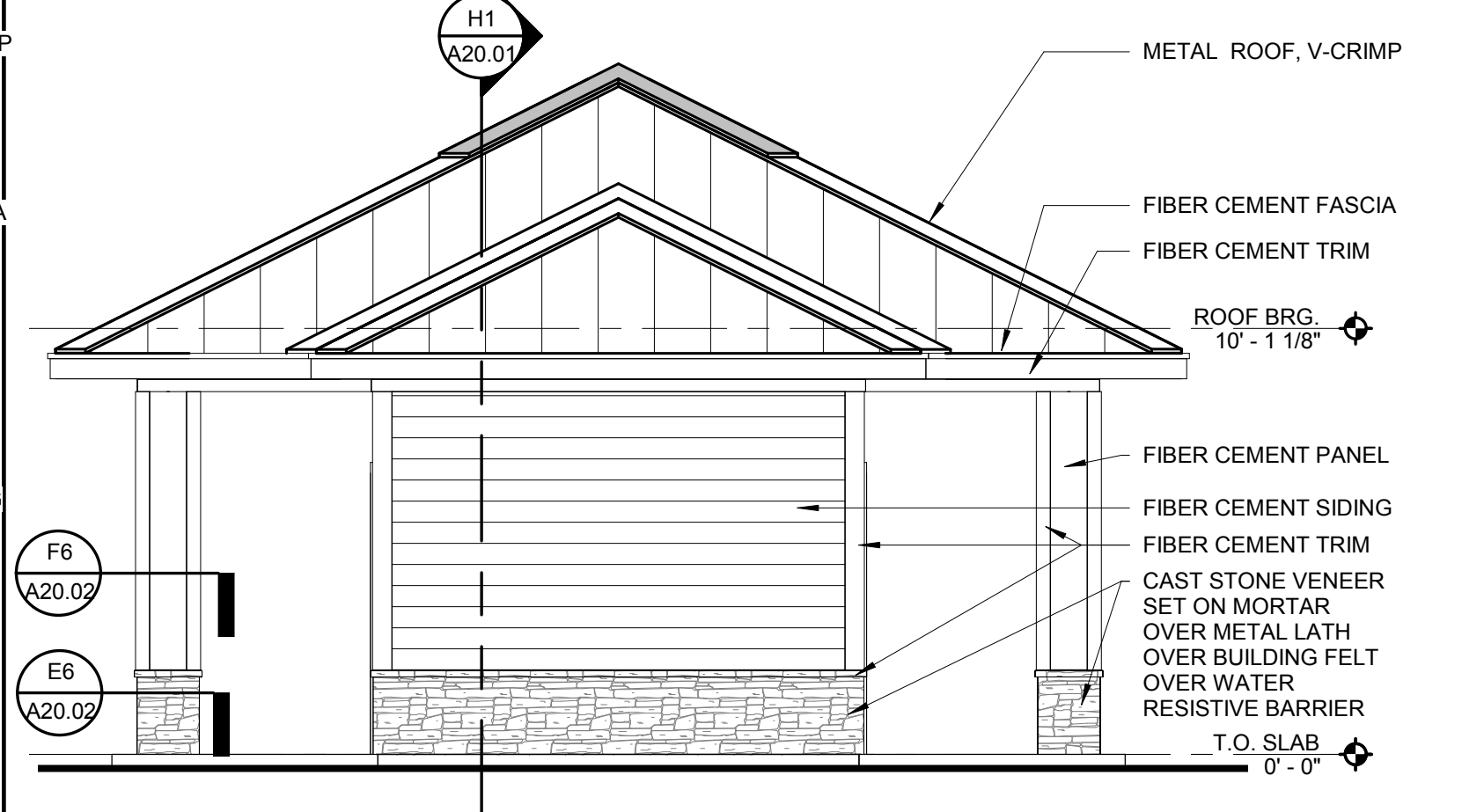
No.	Date	Description
1		
2		
3		
4		
5		

REVISION HISTORY

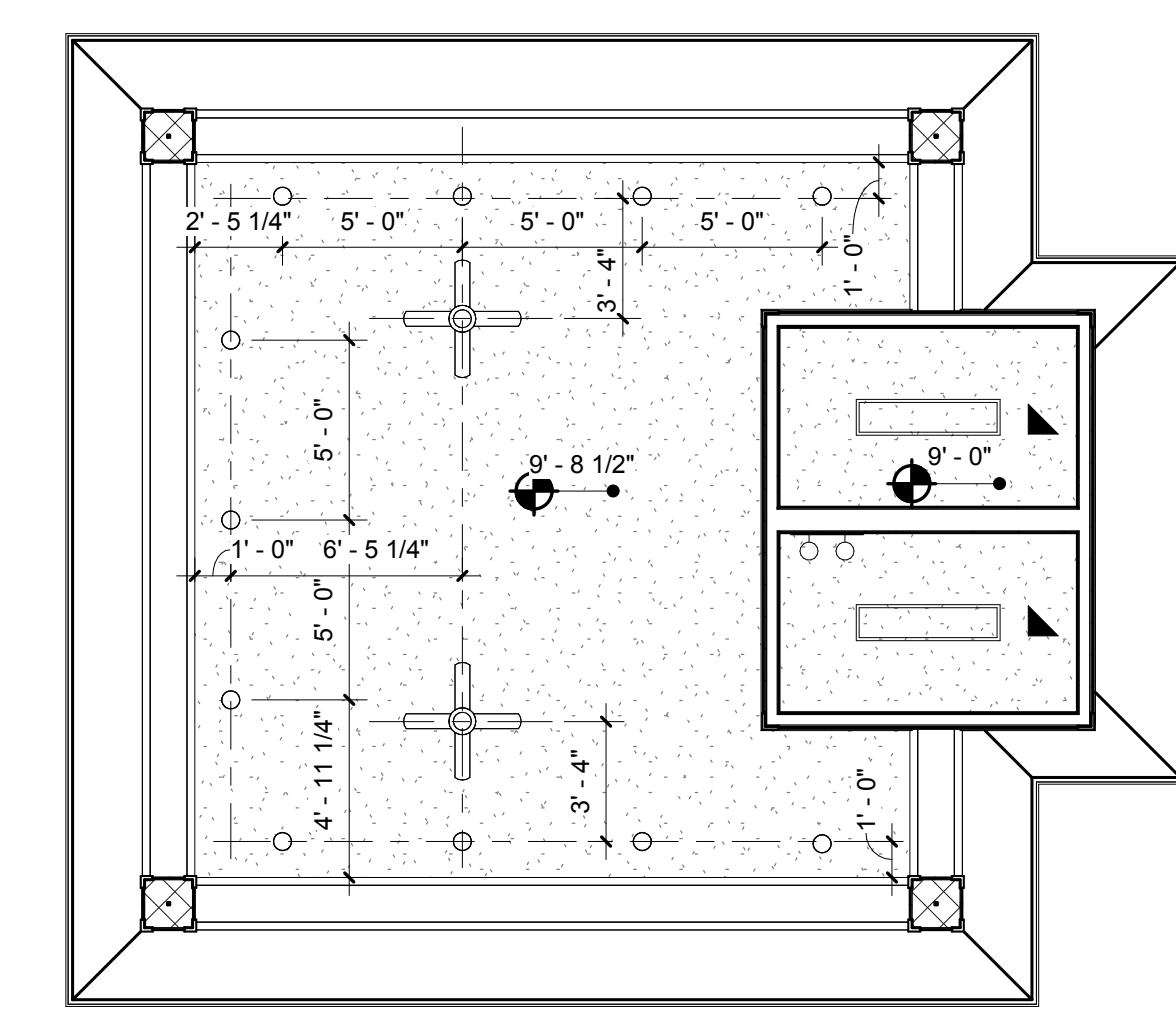
No.	Date	Description



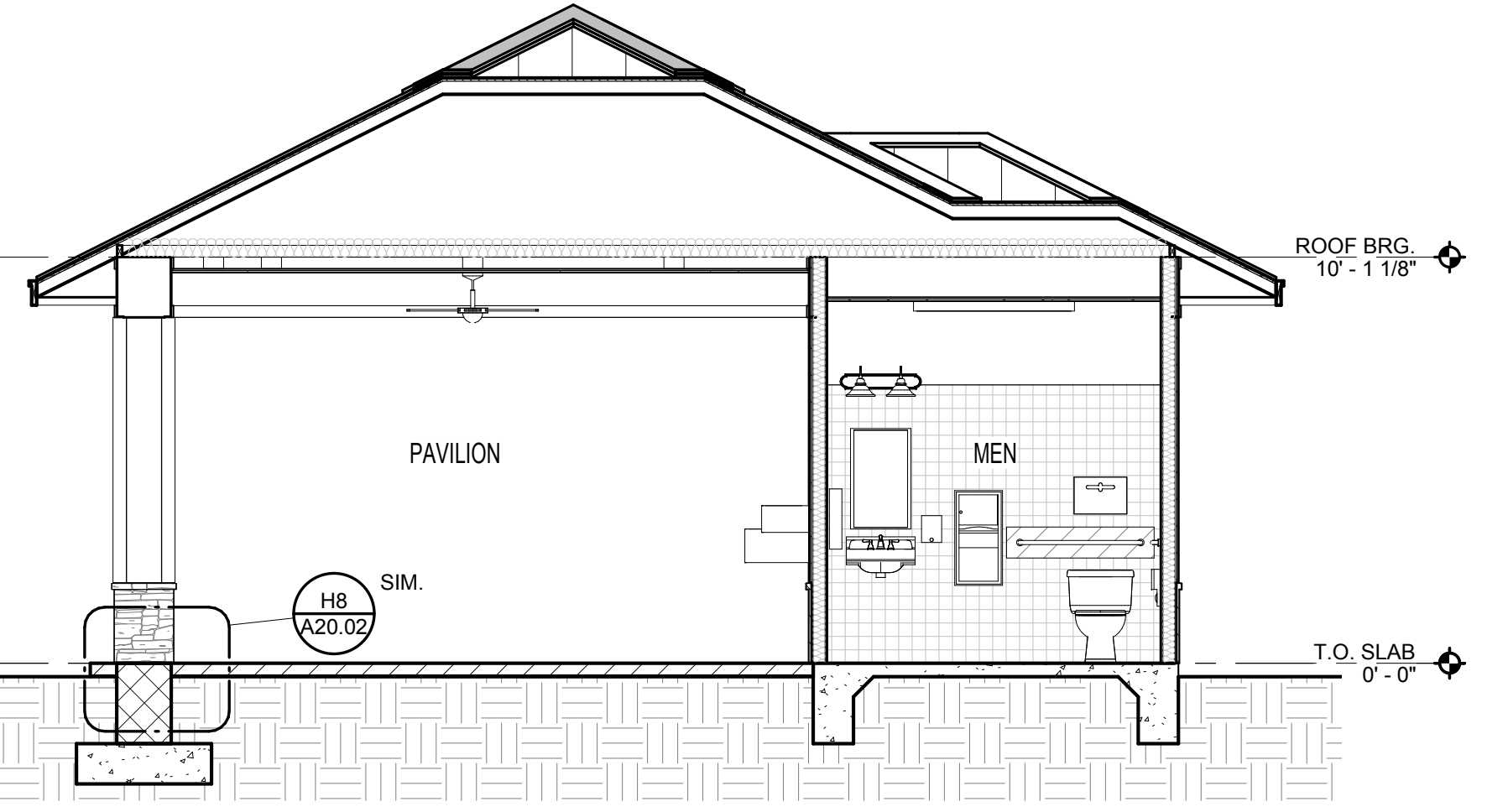
F1 POOL PAVILION SIDE ELEVATION
1/4" = 1'-0"



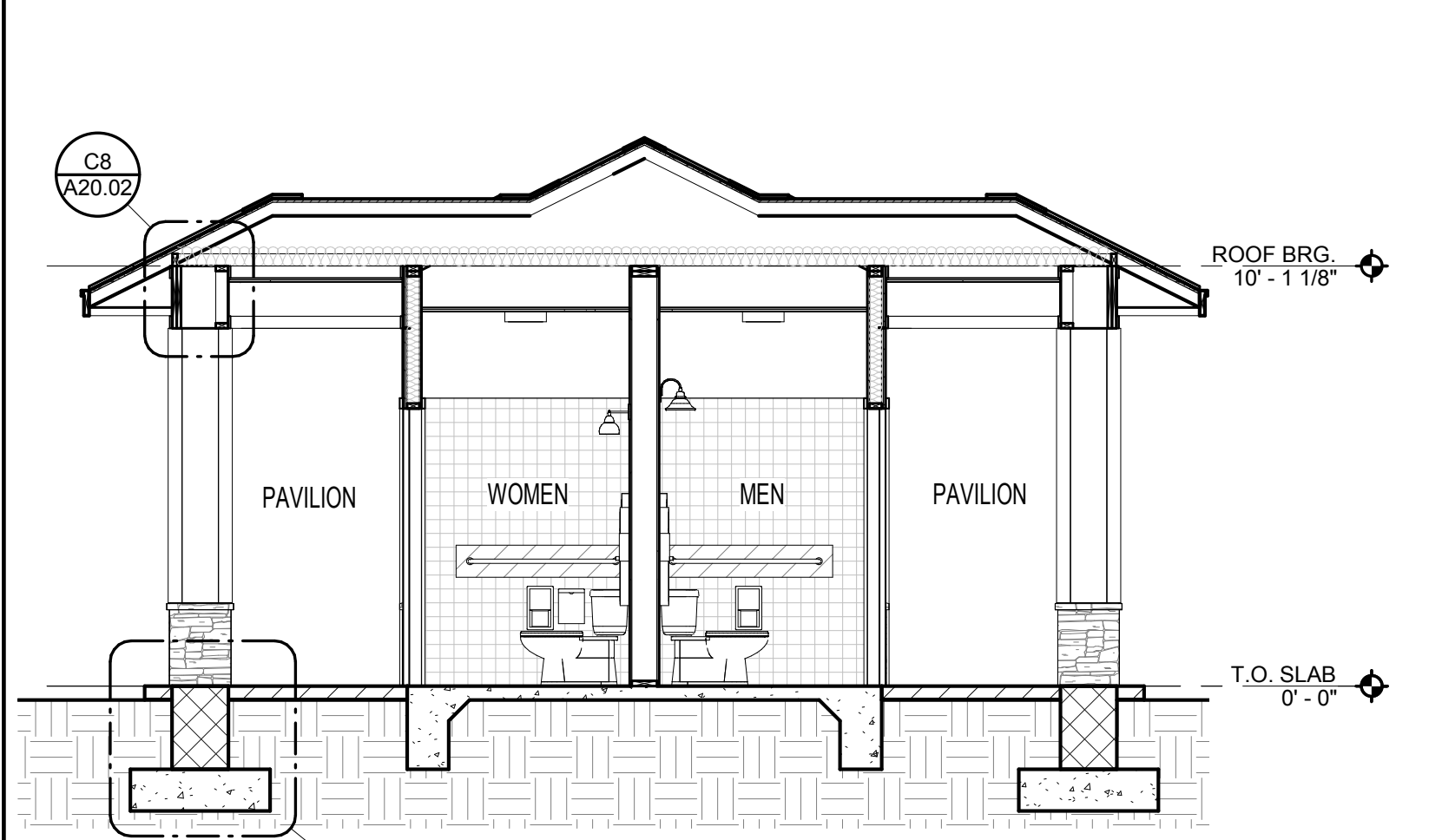
F4 POOL PAVILION REAR ELEVATION
1/4" = 1'-0"



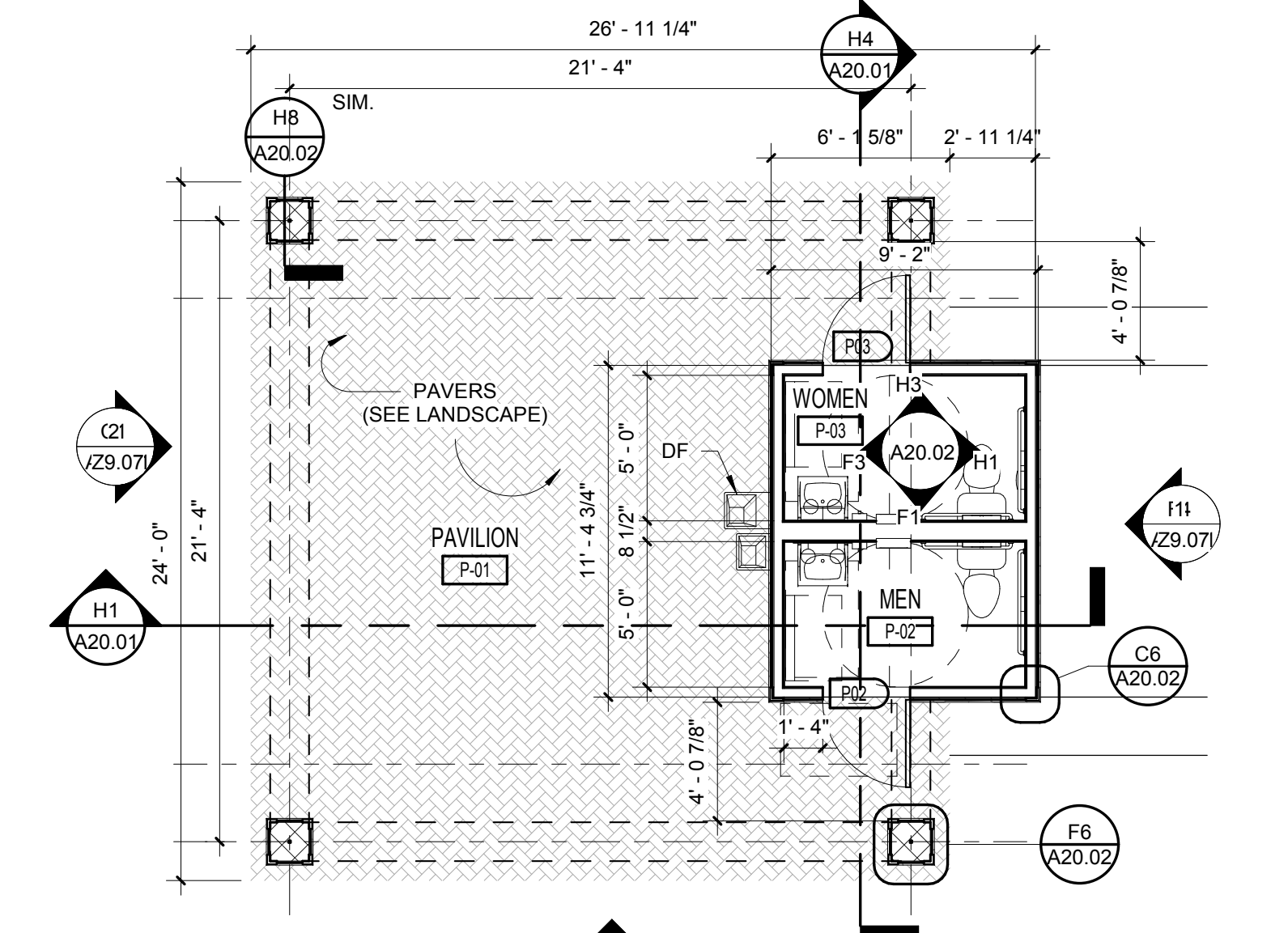
F7 POOL PAVILION REFLECTED CEILING PLAN
3/16" = 1'-0"



H1 POOL PAVILION SECTION
1/4" = 1'-0"



H4 POOL PAVILION BULKHEAD SECTION
1/4" = 1'-0"



H7 POOL PAVILION FLOOR PLAN
3/16" = 1'-0"

FUGLEBERG KOCH
PLLC

2555 Temple Trail, Winter Park, FL 32789 (407) 629-0595
www.fuglebergkoch.com AA26002103

THE ROBERT
FT. MYERS, FL

POOL PAVILION FLOOR PLAN AND ELEVATIONS

A20.01

MICHAEL GOVE
FLORIDA LICENSE #

Drawn: DM
Checked: DM
Approved: MG
Date: 01/01/2020
Project #: 5592