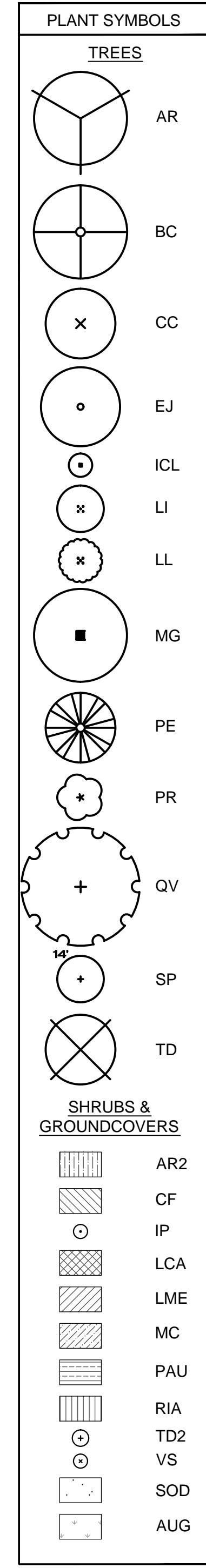
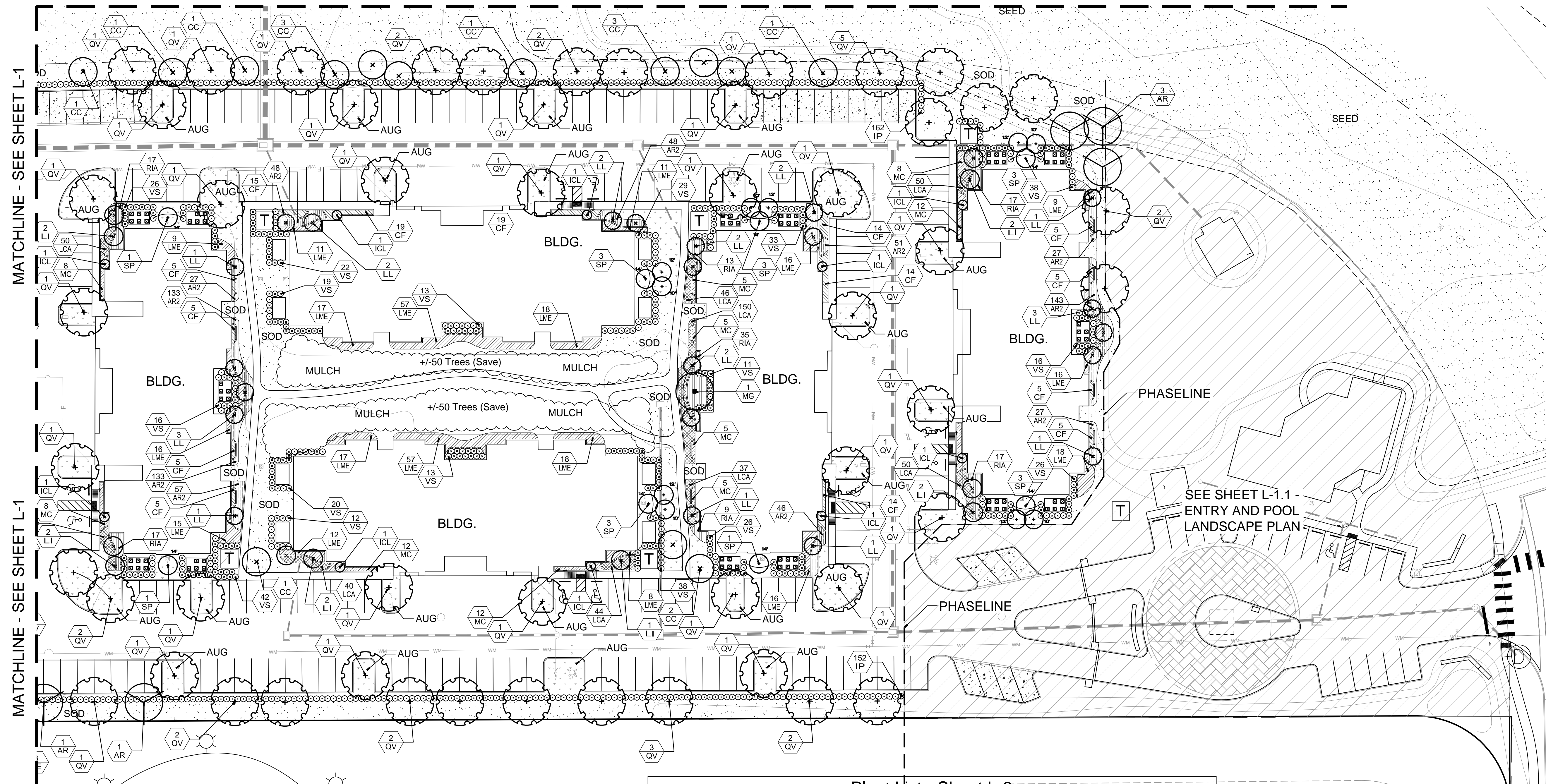


MATCHLINE - SEE SHEET L-2

MATCHLINE - SEE SHEET L-2

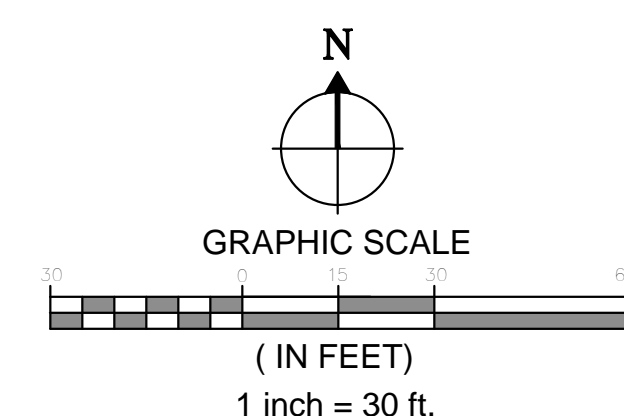


Plant List - Sheet L-3

Count	SYM	BOTANICAL	COMMON	SPECIFICATIONS
Trees				
5	AR	<i>Acer rubrum</i> 'October Glory'	October Glory Red Maple	7-9' ht. x 4-5' spr., 3" cal., 45 gal.
17	CC	<i>Betula nigra</i>	River Birch	6-8' ht. x 3-4' spr., 3" cal., 15 gal.
10	ICL	<i>Ilex 'Cardinal'</i>	Cardinal Holly	6' ht., 2" cal., 15 gal.
11	LI	<i>Lagerstroemia indica</i> 'Natchez'	Crape Myrtle	6-8' ht. x 4-5' spr., 2" cal., 15 gal., multi
22	LL	<i>Ligustrum lucidum</i>	Ligustrum Tree	6-8' ht. x 4-5' spr., 2" cal., 15 gal., multi
1	MG	<i>Magnolia grandiflora</i> 'D.D. Blanchard'	DD. Blanchard Magnolia	9-11' ht. x 4-5' ht., 3" cal., 45 gal.
52	QV	<i>Quercus virginiana</i>	Live Oak	10-12' ht. x 5-6' ht., 3" cal., 45 gal.
18	SP	<i>Sabal palmetto</i>	Sabal Palm	10' C.T. - 14' C.T.
Total				136
Shrubs & Groundcover				
740	AR2	<i>Ajuga reptans</i>	Bugelweed	1 gal., 18" o.c.
135	CF	<i>Cyrtomium falcatum</i>	Holly Fern	1 gal., 2' o.c.
314	IP	<i>Illicium parviflorum</i>	Yellow Anise	30-36" ht., 3 gal., 36" o.c.
467	LCA	<i>Lantana camara</i> 'Anne Marie'	Anne Marie Lantana	1 gal., 18" o.c.
341	LME	<i>Liriope muscari</i> 'Evergreen Giant'	Evergreen Giant Liriope	3 gal., 2.5' o.c.
80	MC	<i>Muhlenbergia capillaris</i>	Muhly Grass	3 gal., 2.5' o.c.
125	RIA	<i>Raphiolepis indica</i> 'Alba'	Dwarf Indian Hawthorn	1 gal., 2.5' o.c.
400	VS	<i>Viburnum suspensum</i>	Sandankwa Viburnum	30-36" ht., 3 gal., 36" o.c.
Sod & Mulch				
	MULCH		Mini Pine Bark	3" Depth
	SOD		Bahia Sod	solid sod, weed free, count by contractor
	SEED		Bahia Seed	
	AUG		St. Augustine	solid sod, weed free, count by contractor

FOR BID PURPOSES ONLY.
NOT FOR CONSTRUCTION

NOTE: Failure to notify Landscape Architect of plan detail, or specification discrepancies prior to construction, makes contractor responsible for all costs incurred for construction charges, not the owner or his representative (Landscape Dynamics Construction Co. Inc.). The Owner must maintain the height of all plants within the "Line-Of-Site" triangle area to a height of no greater than 24" above grade for shrubs and groundcover, and tree branching no lower than 72" above finish grade, to ensure clear site line views toward traffic at road and driveway intersections. Landscape Dynamics Construction Co. Inc. is not responsible for continued maintenance of such plant material. The owner, leasing company and/or the landscape maintenance company accepts full responsibility for these maintenance requirements. LANDSCAPE CONTRACTOR TO HAND WATER ALL PLANT / TREE MATERIAL FOR AT LEAST 30 DAYS AFTER INSTALLATION.



48 HOURS BEFORE YOU DIG
CALL SUNSHINE
1-800-432-4770 or 811
IT'S THE LAW IN FLORIDA
FLORIDA LAW REQUIRES EXCAVATORS TO NOTIFY OWNERS OF UNDERGROUND FACILITIES NO LESS THAN TWO (2) DAYS PRIOR TO EXCAVATION

LANDSCAPE ARCHITECT:
Robert R. Buchanan LA0000932
Professional Seal
Summer Bay Resort
25 Town Center Blvd., Suite C
Clermont, FL 34714
PHN: 888-742-1100
FAX: 352-242-3828

Landscape Dynamics
CONSTRUCTION CO. INC.
LANDSCAPE ARCHITECTS AND PLANNERS

East Landscape Plan
Summer Bay Apartments
Lake Country, Florida

P.O. BOX 2852 - Winter Park, Florida 32790-2852
DATE: 11-18-13
JOB NUMBER: 2013-043
DRAWN BY: BEB
FILE: Landscape
SCALE: 1:30

L-3